

# LASER CUT KAPTON

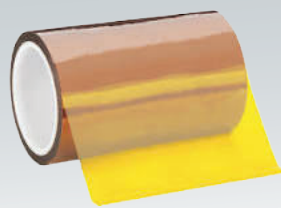
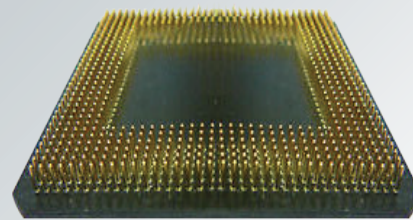
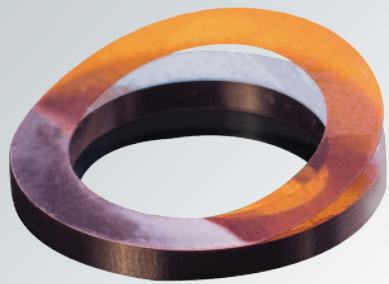
Polyimide film has a broad range of uses due to its superior thermal, mechanical, chemical and electrical properties, making it a top choice in the Medical, Aerospace, and Semiconductor industries.

## SHIM

Its non-conductive properties, as well as its ability to perform well over a wide range of temperatures, make it an excellent insulator that is resistant to radiation, solvents, and other corrosive materials. A perfect choice for flexible shims and seals.

## BGA TEST ADAPTER

For applications requiring higher temperatures and higher density through-holes, Kapton excels due to also being an excellent electrical insulator. It is a perfect choice for thin precision BGA stencils.



## GASKET

Kapton is very easily cut via lasers, making it an optimal choice for special gasket designs that require tight geometry and tolerances.

## FLEX CIRCUIT

Characterized by its high resistance to traction and temperature, and with excellent dielectric properties, Kapton is the most popular choice for flex circuits. Kapton flex circuits combined with laser processing have become a necessity to achieve the ever-growing demand for smaller and tighter assembly of components.